

PRODUCT CATALOG

2026



GLASSWARE

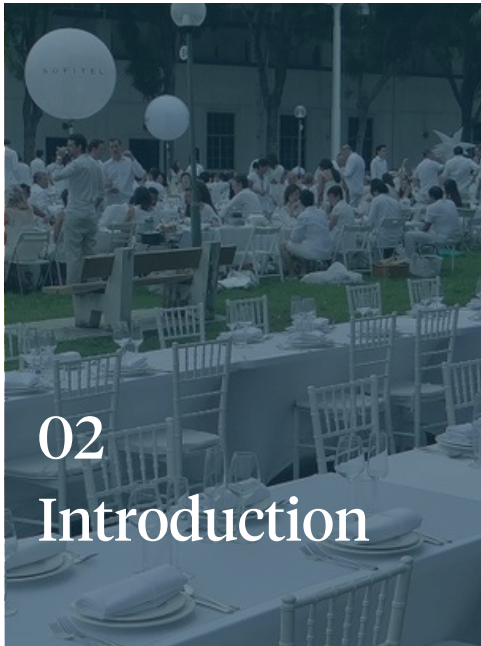
Various sizes and purposes

FORK

Various sizes

PLATES

Various sizes & designs



02
Introduction



05
Glassware



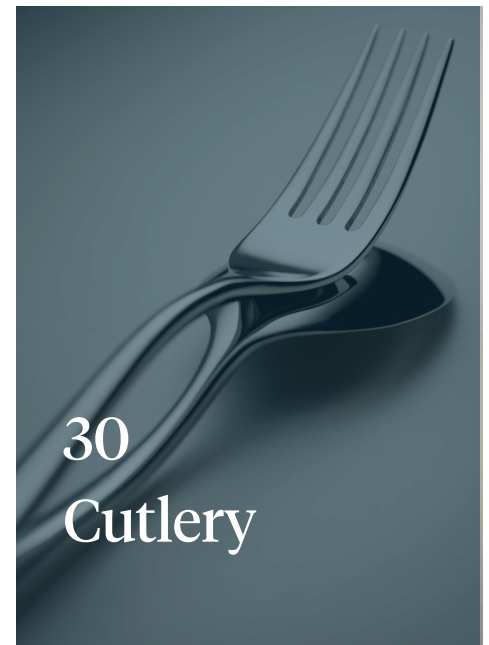
13
Drinkware



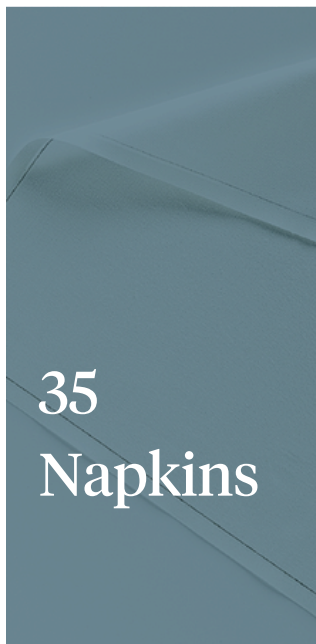
17
Chinaware



25
Porcelainware



30
Cutlery



35
Napkins



38
Buffetware



41
Water
System



42
Tables and
Chairs

ABOUT US

Ece Rental is dedicated to offering an extensive range of rental products in Singapore. Our commitment extends from single-item rentals to bespoke solutions and even long-term rental agreements.

Our comprehensive range of tableware products combined with exceptional service forms the cornerstone of our success. We continually expand and enhance our collection of glassware, chinaware, tableware, cutlery, etc.

AFFORDABLE

Our rental prices are affordable, allowing you to save money while still enjoying high-quality products.

RELIABLE

We take pride in offering exceptional rental service. You can trust us to deliver on time and provide clean and ready-to-use items for your event.

EXTENSIVE

We provide a wide range of rental products that are suitable for various event catering needs.

FLEXIBLE

Whether adjusting quantities, arranging delivery, or providing personalized recommendations, we strive to accommodate your specific needs.



REFERENCES

We take pride in showcasing our esteemed partners who have entrusted us to elevate their memorable events with our exquisite tableware rentals. Their trust in our tableware rental services has allowed us to contribute to numerous weddings, corporate gatherings, galas, and intimate celebrations.



BEST SELLERS

Indulge in sophistication and refinement with our best-selling glassware and chinaware. Our glassware collection offers a seamless blend of style and durability, adding a touch of sophistication to your dining experience. Meanwhile, our exquisite chinaware boasts timeless designs and graceful functionality, elevating the presentation of your dining affair.

GLASSWARE

Various shapes and sizes

MULTIPURPOSE WINE GLASS 35CL - TYPE 2



1.

HIGHBALL GLASS - 30CL



2.

CHINAWARE

Various shapes and sizes

ROUND RIM DINNER PLATE 10"



3.

ROUND RIM SMALL PLATE 6"



4.



GLASSWARE

Explore our exquisite glassware collection, each piece meticulously crafted to add sophistication to your gatherings. From wine glass to martini glass, find the perfect touch of style and refinement for your memorable occasions.

STANDARD COLLECTION



**MULTIPURPOSE WINE
GLASS**
35 cl - Type 1



**MULTIPURPOSE WINE
GLASS**
35 cl - Type 2



WHITE WINE GLASS
25.5 cl



CHAMPAGNE FLUTE
20 cl



HIGHBALL GLASS
30 cl



ROCK GLASS
35 cl

STANDARD COLLECTION



BEER GLASS
35 cl - Type 1



BEER GLASS
35 cl - Type 2



CHAMPAGNE SAUCER
13.5 cl



MARTINI GLASS
20.5 cl



SHOT GLASS
5.7 cl

LUXURY COLLECTION

kes-shō

Conceived and founded by a trio of hospitality professionals with a belief that high-quality crystal glassware should not only be beautiful, but also practical and accessible.

Hand-crafted crystal glassware offers unrivaled delicacy, with a clarity and lightness that cannot be matched by glass.



**ALL KES-SHO GLASSWARE IS
HAND CRAFTED FROM LEAD
FREE CRYSTAL**



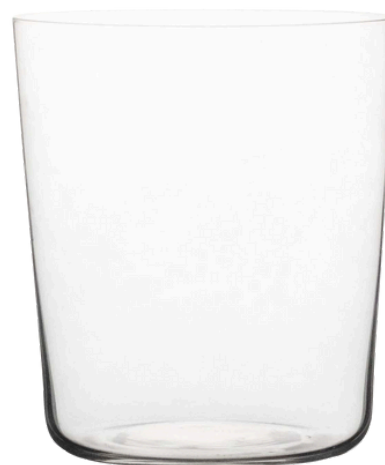
FREDDIE T. - 220

Height: 53mm, Diameter : 73mm,
Capacity: 220ml



FREDDIE T. - 320

Height: 71mm, Diameter : 83mm,
Capacity: 320ml



GEBER - 350

Height: 90mm, Diameter : 79mm,
Capacity: 350ml



PRIESTLEY - 360

Height: 135mm, Diameter : 65mm,
Capacity: 360ml



PRIESTLEY - 430

Height: 143mm, Diameter : 68mm,
Capacity: 430ml



WEE PIA PIA

Height: 82mm, Diameter : 44mm,
Capacity: 150ml



PIA PIA

Height: 115mm, Diameter : 60mm,
Capacity: 425ml



MUSTACHE AND SUSPENDERS

Height: 150mm, Diameter : 107mm,
Capacity: 195ml



WHIPLASH

Height: 190mm, Diameter : 100mm,
Capacity: 200ml



PILAR

Height: 150mm, Diameter : 75mm,
Capacity: 140ml



EXISTENTIAL

Height: 234mm, Diameter : 48mm,
Capacity: 275ml



REDUX

Height: 173mm, Diameter : 74mm,
Capacity: 150ml



WINE GLASS II

Height: 240mm, Diameter : 53mm,
Capacity: 520ml



DRINKWARE

Elevate your entertaining experience with our collection of functional drinkware. From classic beer glasses to versatile plastic boxes, our range is designed to meet every beverage-serving need for any occasion.

STANDARD COLLECTION

BUCKET, TRAYS AND OTHERS



PLASTIC BOX
65 x 45 x 35 cm



SPITTOON



PEBBLED BOWL
Diameter: 38 cm



PEBBLED BOWL
Diameter: 32 cm



GLASS HOLDER



WATER / JUICE JUG



METAL PUNCH BOWL 15L

3 - 4 bottles



**METAL WINE /
CHAMPAGNE BUCKET**



METAL ICE BUCKET



ICE TONGS



**GIANT CHAMPAGNE BUCKET STAINLESS
STEEL FOR 12 BOTTLES**

Dimensions : 75 cm x 65 cm x 19 cm / 15 L



STAINLESS STEEL SERVING TRAY

Diameter = 15 Inch



BROWN SERVING TRAY

Diameter = 14 Inch



BROWN SERVING TRAY

Diameter = 13.5 Inch



WOOD BOARD

Length = 39cm, Width = 30cm



CHINAWARE

Discover quality in every detail, from our exquisite dinner plates to our traditional rice bowls. Enrich your table setting with the genuine essence of Chinese culture and craftsmanship. Explore our range featuring Chinese teapots, creamers, and soup tureens.

STANDARD COLLECTION



ROUND RIM SMALL PLATE

6 Inch



ROUND RIM SMALL PLATE

9 Inch



ROUND RIM DINNER PLATE

10 Inch



ROUND RIM DINNER PLATE

12 Inch



ROUND SERVING PLATE

14 Inch



UFO PLATE

Diameter = 28.5cm



LONG OVAL DEEP PLATE

12 Inch



LONG OVAL DEEP PLATE

18 Inch



WHITE GOURMET DEEP PLATE

9.5 Inch



COFFEE / TEA CUP & SAUCER

15 cl



SIDE DISH / RICE BOWL

5 Inch



SMALL SOUP BOWL

4 Inch



SOUP BOWL WITH HANDLE & SAUCER
4 Inch



SOUP TUREEN W/COVER
4000cc



CHINESE TEAPOT
9cm x 10cm



CHINESE TEAPOT
9cm x 21.5cm



VINEGAR HOLDER
110 cc



ROUND RIM SAUCE DISH
3.5 Inch



CREAMER



CHINESE SPOON PORCELAIN



WHITE CHOPSTICKS



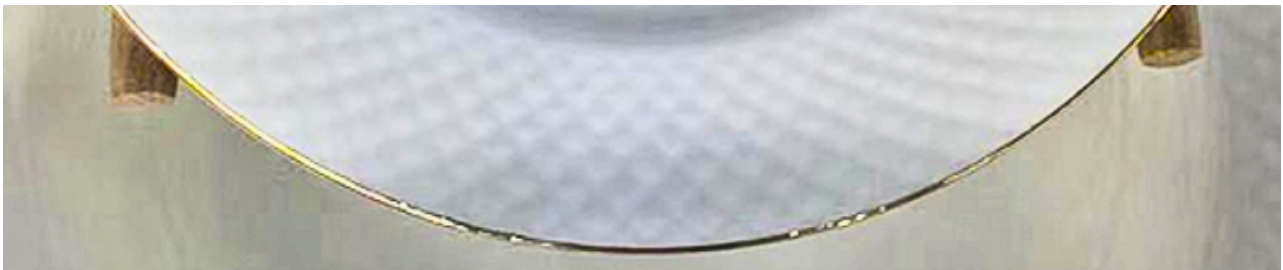
GOLDEN CHOPSTICKS

LUXURY COLLECTION

ZURICH GOLD RIM ROUND DINNER PLATE

Our premium gold-rim plates exude elegance and sophistication, perfect for elevating any dining experience. Crafted from high-quality bone china, each plate features a delicate, hand-finished gold trim that adds a luxurious touch.

A CLOSE UP ON THE GOLD RIM



**ZURICH GOLD RIM ROUND
DINNER PLATE**

8 Inch



**ZURICH GOLD RIM ROUND
DINNER PLATE**

10.5 Inch

LUXURY COLLECTION

VIENNA GOLD SHOW PLATE

Vienna Gold combines timeless elegance with refined detail. Its rim features an intricate gold interlocking pattern, evoking classic European design. With its luxurious finish and regal charm, it's perfect for sophisticated and elevated dining settings.



TOKYO MIDNIGHT SHOW PLATE

Tokyo Midnight exudes modern opulence with a bold, architectural design. Its rich black rim, segmented by fine gold lines, creates a dramatic contrast that feels both contemporary and timeless. Designed to impress, this show plate elevates any setting with an air of sophistication and sleek luxury.



LUXURY COLLECTION

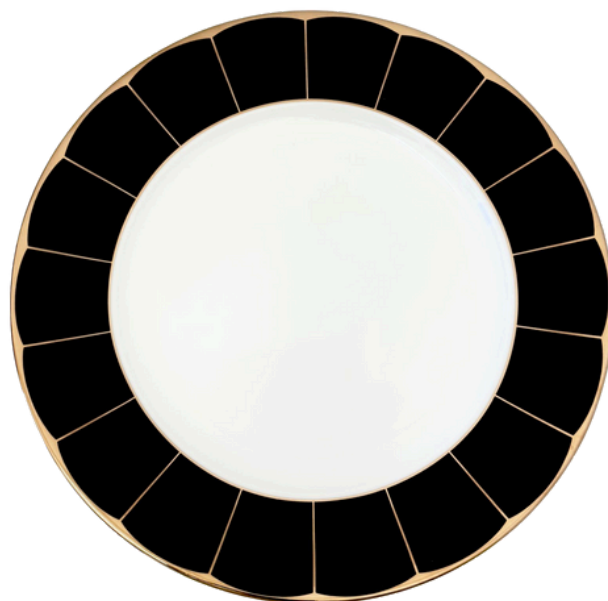


VIENNA GOLD - SHOW PLATE

Diameter 10.5 Inch

TOKYO MIDNIGHT - SHOW PLATE

Diameter 10.5 Inch





PORCELAINWARE

Experience sheer excellence with our meticulously crafted collection of premium porcelain plates, cutlery and crystal glassware. Each item is designed with timeless charm and superior craftsmanship, ensuring a touch of refined beauty.

LUXURY COLLECTION



FRENCH PORCELAIN PLATES

White Table Hommage Collection - Designed by Level for Thomas Keller

“Hommage” is very white, very flat porcelain; generously wide rimmed and superimposed with shapes to inspire the chef and enhance the food. “Hommage” is an unostentatious part of the set up and can be used from preparation in the kitchen to tasting in the restaurant.

The porcelain is manufactured by Raynaud in Limoges. Designed by Level for Thomas Keller and found in per se New York.



HOMMAGE RANGE , FLAT ROUND PLATE

Diameter 12.6 inch, round center 6.7 inch



HOMMAGE RANGE, FLAT ROUND PLATE

Diameter 12.6 inch,
oval center 6.9 x 5.9 inch



HOMMAGE RANGE , FLAT OVAL PLATE

Diameter 12.6 inch,
oval center 6.9 x 5.9 inch

LUXURY COLLECTION



Villeroy & Boch

1748

COPPER GLOW

Copper Glow brings you hand-painted artistry on every item. Applied like a ribbon over the rim, it features a delicate “swirl structure” with an aesthetic that is hand-crafted and bold. Thanks to the fine copper lustre, Copper Glow is a star in the world of dining.



THE ROCK WHITE GLACIER

A true reflection of nature: the minimalistic, expressive design of The Rock is inspired by natural slate shapes, which are transferred to the finest Premium Porcelain using highly demanding processes that recreate their natural look and feel.





Villeroy & Boch

1748



COPPER GLOW - FLAT PLATE

Diameter 11.5 inch



THE ROCK - COUPE FLAT PLATE

Diameter 11.5 inch

LUXURY COLLECTION



THE ART OF ITALIAN GLASS

IVV “Babilonia” Collection – Italian Handcrafted Glass

“Luce” embodies the harmony of Italian craftsmanship and modern design — a luminous collection of hand-finished glass plates that capture and reflect light with exceptional clarity. Each piece is defined by its subtle texture and gentle curvature, designed to elevate the visual composition of any dish while maintaining effortless versatility from kitchen to table.

Produced in Tuscany by **IVV (Industria Vetraria Valdarnese)**, one of Italy’s most respected glassmakers, “Luce” combines artisanal tradition with contemporary durability.



BABILONIA - GLASS FLAT PLATE

Diameter 10.5 inch



CUTLERY

Exemplifying finesse and practicality, our cutlery collection sets the standard for refined dining experiences. Rent our range of high-quality forks, knives, spoons, and specialty serving utensils to transform your table into a showcase of elegance for any event or gathering.

STANDARD COLLECTION



TABLE SPOON

20.2 cm



APPETIZER / DESSERT SPOON

17.9 cm



COFFEE / TEA SPOON

13.6 cm



SOUP SPOON

16.8 cm



TABLE FORK
20.2 cm



TABLE KNIFE
23.8 cm



DESSERT / SALAD FORK
17.8 cm



DESSERT / SALAD KNIFE
20.7 cm



CAKE FORK
14 cm



BUTTER KNIFE
17.5 cm

LUXURY COLLECTION

STAINLESS STEEL GOLD CUTLERY

Gold Stainless Steel PVD Cutlery, a real jewel to enhance your table for special occasions. Whether it's a formal dinner or a casual gathering, the shimmering gold finish catches the light beautifully, impressing guests with a touch of opulence.



TABLE FORK

21.5 cm



TABLE KNIFE

22cm



TABLE SPOON

20.7 cm



APPETIZER/DESSERT SPOON

19 cm

LUXURY COLLECTION

PREMIUM SILVER CUTLERY

Premium Silver Stainless Steel PVD Cutlery, offers timeless elegance with a modern edge. Crafted in polished stainless steel and featuring delicate handle detailing, it brings refined beauty to both formal dinners and stylish everyday settings



TABLE SPOON

20 cm



TABLE KNIFE

24 cm



TABLE FORK

20.6 cm



DESSERT / CAKE FORK

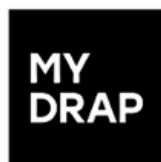
14 cm



NAPKINS / COASTERS

Introducing our soft-touch, 100% cotton napkins and coasters—crafted to refine your dining experience while offering convenience. Luxuriously soft yet highly durable, these napkins and coasters provide an stylish touch while effectively reducing washing costs.

DISPOSABLE COLLECTION

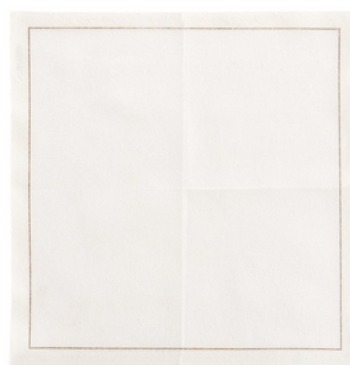


PROFESSIONAL



CREAM COASTERS /NAPKINS

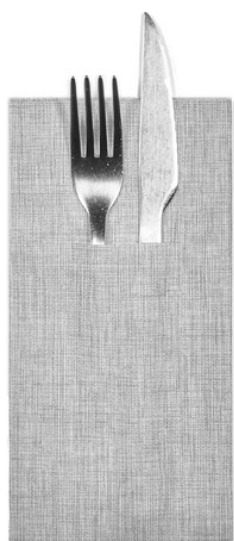
10 x 10cm, 100% cotton
Delivered in roll of 100 units



CREAM NAPKINS

20 x 19cm, 100% cotton
Delivered in roll of 100 units

FRAM



DISPOSABLE NAPKINS

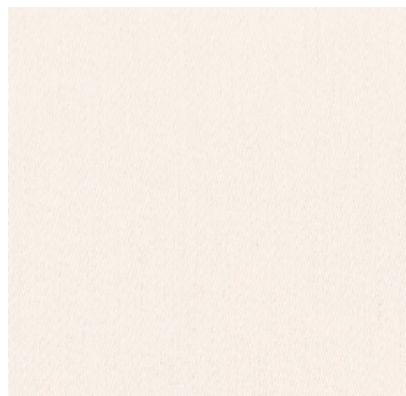
40 x 40cm, Folded 1/8 with 3 cutlery insert
Delivered in box of 600 pcs

WASHABLE COLLECTION



DINER NAPKIN BLACK - STANDARD HEMS

50 x 50 cm, Polycotton
Delivered in pack of 20pcs



GARNIER THIEBAUT DINER NAPKIN IVORY - MITRED CORNER HEMS

30 x 40 cm, Polycotton
Delivered in pack of 20pcs



BUFFETWARE

Transform your catering experience with our comprehensive buffetware collection. Our selection of chafing dish sets and soup warmers ensure your dishes remain warm and inviting. Complemented by essential accessories like wine openers and serving spoons, our buffetware guarantees a seamless serving experience for your events.

STANDARD COLLECTION



CHAFING DISH SET

Cover + Water Pan + Food Pan +
Metallic Framework
GN 1/1 or GN 1/2 (W36 x D57 x H33cm)



SOUP WARMER

Width = 29cm , Height = 22cm



SOUP WARMER

Width = 24cm , Height = 21cm



CHAFING FUEL



FOOD PAN 1/2



FOOD PAN 1/1



SERVING SPOON



LADLE



SERVING TONGS



WINE OPENER



LARGE CAKE STAND

Height: 10 cm, Diameter: 38 cm



SMALL CAKE STAND

Height: 18 cm, Diameter: 32 cm

PREMIUM WATER SYSTEM

PUREZZA™

PREMIUM WATER

Counter Top Dispensing Solutions

Elegantly designed with powerful tap dispensing, featuring in-line UV LED



The Frizzante 80 manual is a robust and reliable dispenser providing purified chilled, ambient and sparkling water. The unit has been designed with HoReCa environment in mind, where high output and high flow are essential.

FRIZZANTE 80 MANUAL

80 Litre of water per hour
Includes CO2 tank, installation and collection

Also available in standalone cabinet !



TABLES & CHAIRS

Discover comfort and style with our impressive range of tables and chairs, curated to create inviting and functional spaces. From sleek, modern designs to timeless classics, our collection offers versatility for any occasion.

STANDARD COLLECTION



**6FT LONG FOLDING TABLE WITH
BLACK LINEN**

760mm x 1830mm x 740mm



**6FT LONG FOLDING TABLE WITH
BLACK SPANDEX**

760mm x 1830mm x 740mm



**4FT LONG FOLDING TABLE WITH
BLACK LINEN**

610mm x 1220mm x 740mm



**4FT LONG FOLDING TABLE WITH
BLACK SPANDEX**

610mm x 1220mm x 740mm



**6FT ROUND FOLDING TABLE WITH
BLACK LINEN**

1800mm x 1800mm x 740mm



**COCKTAIL TABLE WITH
BLACK SPANDEX**

600mm x 600mm x 1050mm



LEM BARSTOOL - BLACK

Max Height = 385mm x 455mm x 880mm

Min Height = 385mm x 455mm x 660mm



WHITE TIFFANY CHAIR WITH BLACK CUSHION

410mm x 400mm x 940mm



GOLD TIFFANY CHAIR WITH WHITE CUSHION

410mm x 400mm x 940mm



COCKTAIL TABLE WITH TASSEL

410mm x 400mm x 940mm

DELIVERY & COLLECTION POLICY

We appreciate having the chance to work with you and look forward to a successful event on your end.

As we have the following clause for our rental:

Unless otherwise specified, all tableware, flatware, and glassware are delivered clean (but not polished) and may have watermarks. Our linen may contain folding lines.

Customers must check and accept the quality and quantity of our delivered items. For collection, items should be rinsed, food-free, and repacked into original containers as received. If the customer has no access to a water point, an additional cleaning charge (minimum 100 SGD) will be incurred. Please note that we do not provide set up or tear down services; we solely deliver to the doorstep.

Here is a comparison chart for what we require for the return of the items:

Eligibility for Return



Not Eligible for Return



Glass Cleaning Process & Water Marks

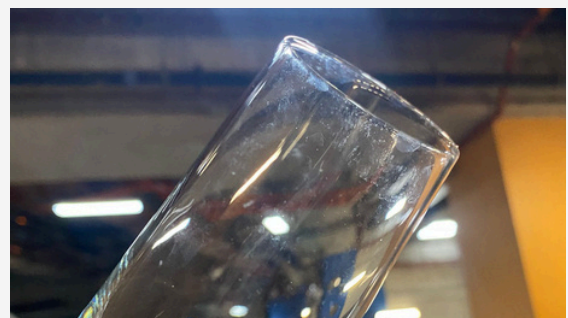
We appreciate having the chance to work with you and look forward to a successful event on your end.

Important Notice for Our Rentals:

Our glasses undergo a rigorous cleaning process, being washed twice at temperatures of up to 80°C in a dishwasher before being sent out. However, they are not polished. As a result, some glasses may have visible water marks from the drying process—these are not dirt or stains but a natural outcome of wet glasses drying.

We prioritize **hygiene and efficiency**, ensuring every glass is thoroughly sanitized and ready for use. While not all glasses will have water marks, please note that some may appear due to our polish-free process.

For reference, please see the images below demonstrating acceptable and excessive water marks. If you have any concerns, feel free to contact us for clarification.



REVIEW US ON



ECE *Rental*

DRINKING & DINING ANYWHERE

THANK YOU FOR CHOOSING
ECE RENTAL!

We truly appreciate your trust in us and are delighted to have had the opportunity to support your event needs.

HAD A GREAT EXPERIENCE WITH ECE RENTAL?
WE'D LOVE TO HEAR YOUR FEEDBACK!

Leave us a 5-star Google review, and as a thank-you,
we'll send you a \$5 eCapitaVoucher to show our appreciation.



FIND US ON INSTAGRAM
@ECE_RENTAL

UNDER THE FULUXE GROUP

ECE Rental is under the Fuluxe group, which has been serving over 1000 satisfied hotels, restaurants, and catering companies in the hospitality sector since 2013.

fuluxe

Bespoke & Exclusive
Hospitality Solutions

OUR GROUP

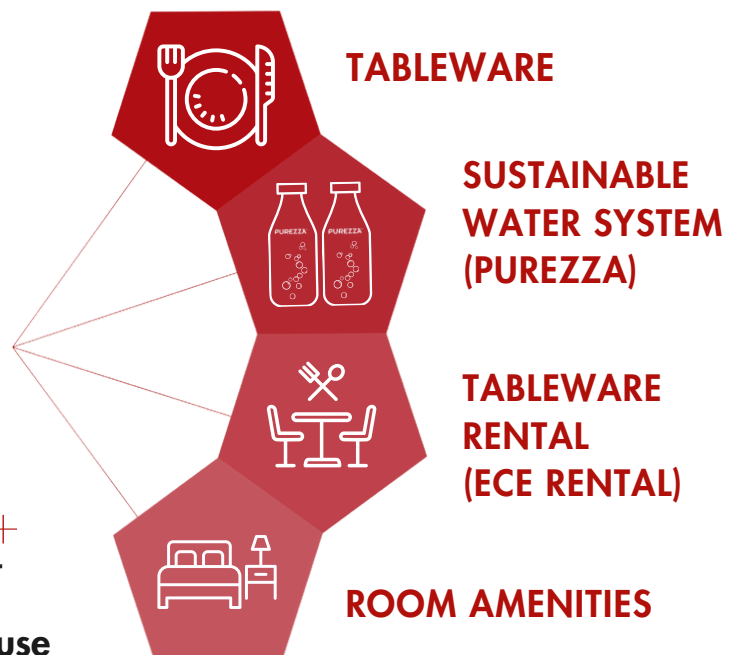
12 Years +
Hospitality
Experience

1000+

Satisfied
Customers

20+
Employees

4000 sqft +
Showroom,
office, warehouse





ECE *Rental*

DRINKING & DINING ANYWHERE

CONTACT US TODAY AT +65 9132 5244

